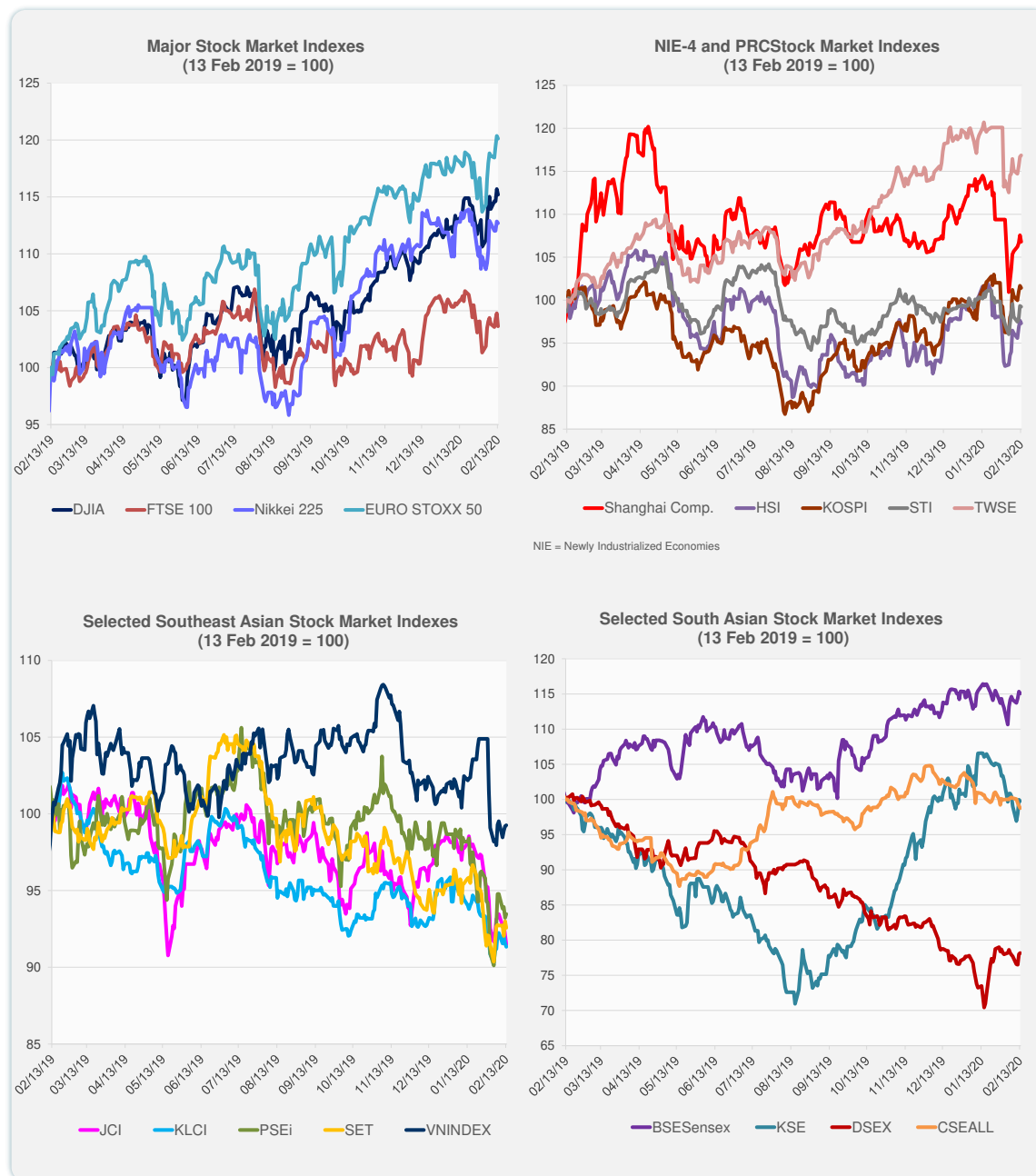
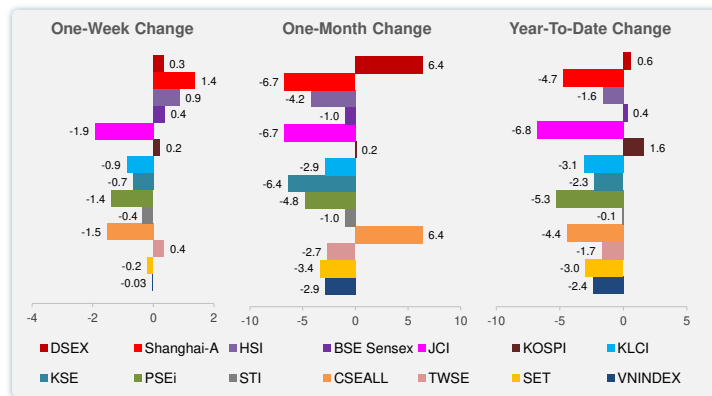


	Latest Closing	% change from Previous Day	% change from 01-Jan-20
US Dow Jones Ind Avg	29,423.31	-0.43	3.10
US NASDAQ	9,711.97	-0.14	8.24
US S&P 500	3,373.94	-0.16	4.43
UK FTSE 100	7,452.03	-1.09	-1.20
EURO STOXX 50	3,846.74	-0.20	2.71
Japan NIKKEI 225	23,827.73	-0.14	0.72
Bangladesh DSEX	4,480.83	0.21	0.63
PRC Shanghai Comp.	2,906.07	-0.71	-4.72
Hong Kong, China HSI	27,730.00	-0.34	-1.63
India BSE Sensex	41,459.79	-0.26	0.37
Indonesia JCI	5,871.95	-0.70	-6.79
Korea, Rep. of KOSPI	2,232.96	-0.24	1.61
Malaysia KLCI	1,539.16	-0.24	-3.12
Pakistan KSE 100	40,455.44	-0.19	-2.28
Philippines PSEi	7,403.12	0.27	-5.27
Singapore STI	3,220.09	-0.10	-0.09
Sri Lanka CSEALL	5,857.30	-0.36	-4.44
Taipei, China TWSE	11,791.78	0.15	-1.71
Thailand SET	1,532.77	-0.46	-2.98
Viet Nam VNINDEX	938.24	0.06	-2.37

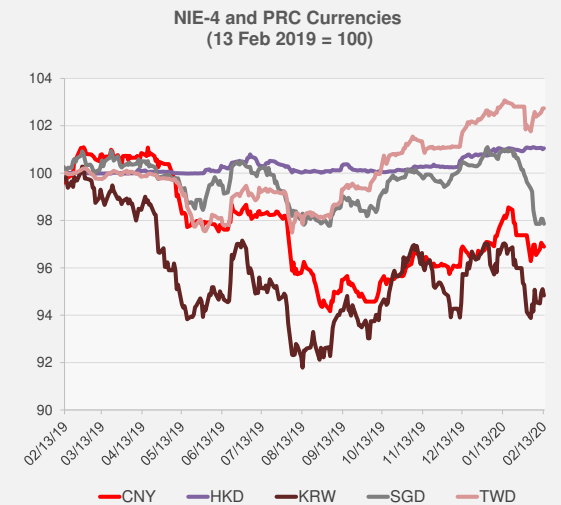
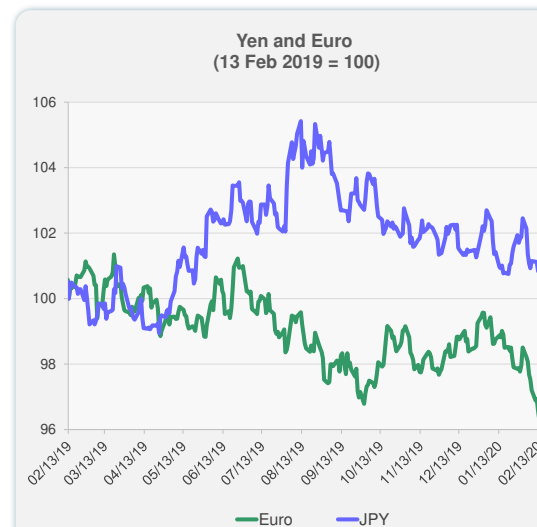
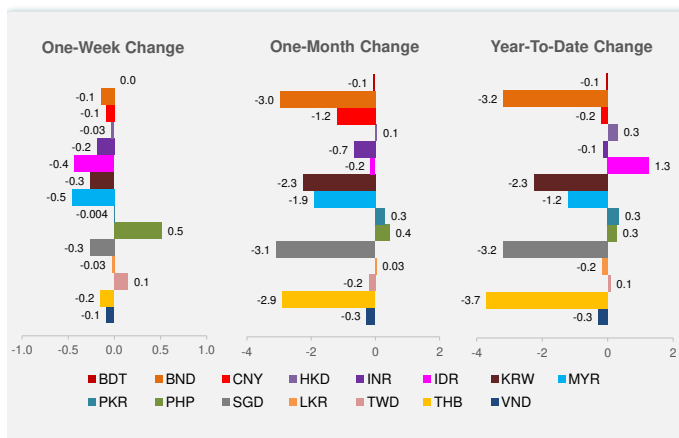


Source: Bloomberg.

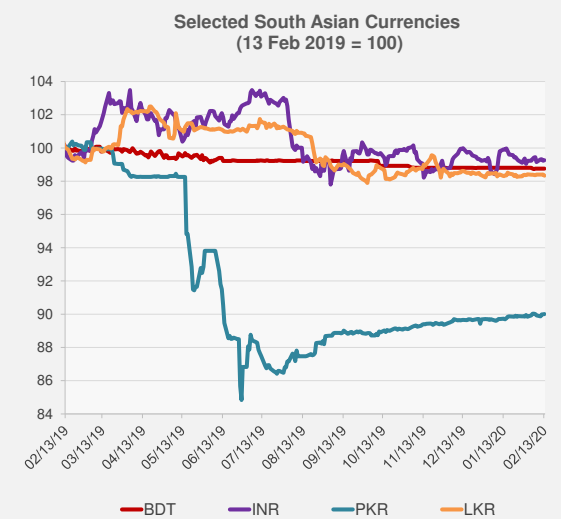
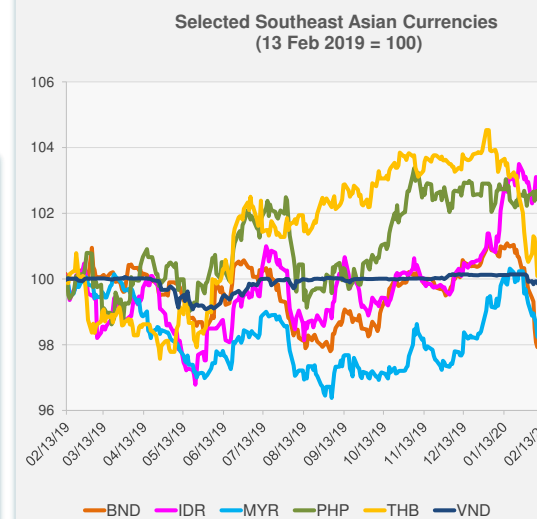


Source: Bloomberg.

	Latest Closing	% change from Previous Day	% change from 01-Jan-20
Euro	0.92	-0.30	-3.31
Japanese yen (JPY)	109.82	0.25	-0.97
Bangladeshi taka (BDT)	84.93	0.00	-0.06
Brunei dollar (BND)	1.39	-0.22	-3.18
Chinese yuan (CNY)	6.98	-0.08	-0.20
Hong Kong dollar (HKD)	7.77	0.04	0.30
Indian rupee (INR)	71.33	0.03	-0.14
Indonesian rupiah (IDR)	13,694.00	-0.15	1.26
Korean won (KRW)	1,182.95	-0.29	-2.26
Malaysian ringgit (MYR)	4.14	-0.11	-1.22
Pakistan rupee (PKR)	154.37	0.02	0.34
Philippine peso (PHP)	50.51	0.12	0.28
Singapore dollar (SGD)	1.39	-0.21	-3.20
Sri Lanka rupee (LKR)	181.48	-0.07	-0.17
Taipei,China NT dollar (TWD)	30.01	0.01	0.09
Thai baht (THB)	31.12	0.08	-3.71
Vietnamese dong (VND)	23,239.00	0.01	-0.28



NIE = Newly Industrialized Economies



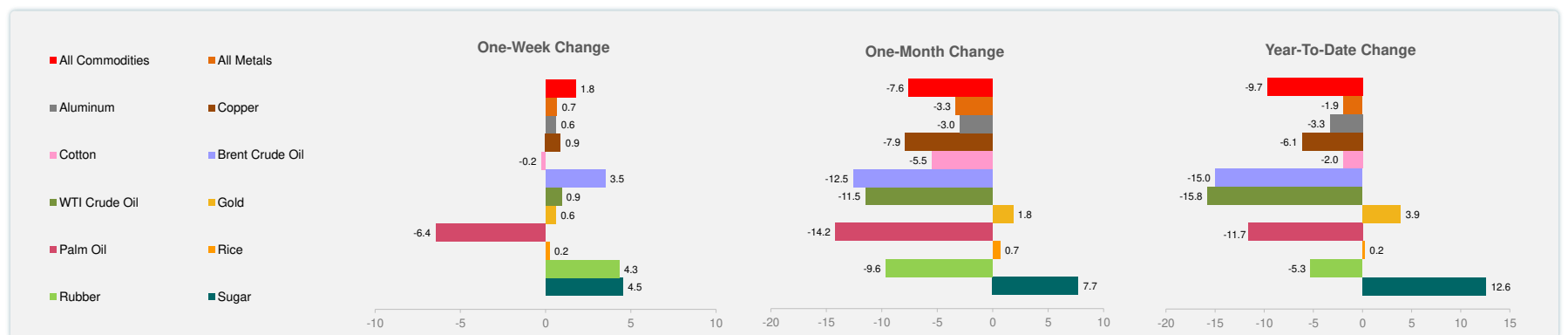
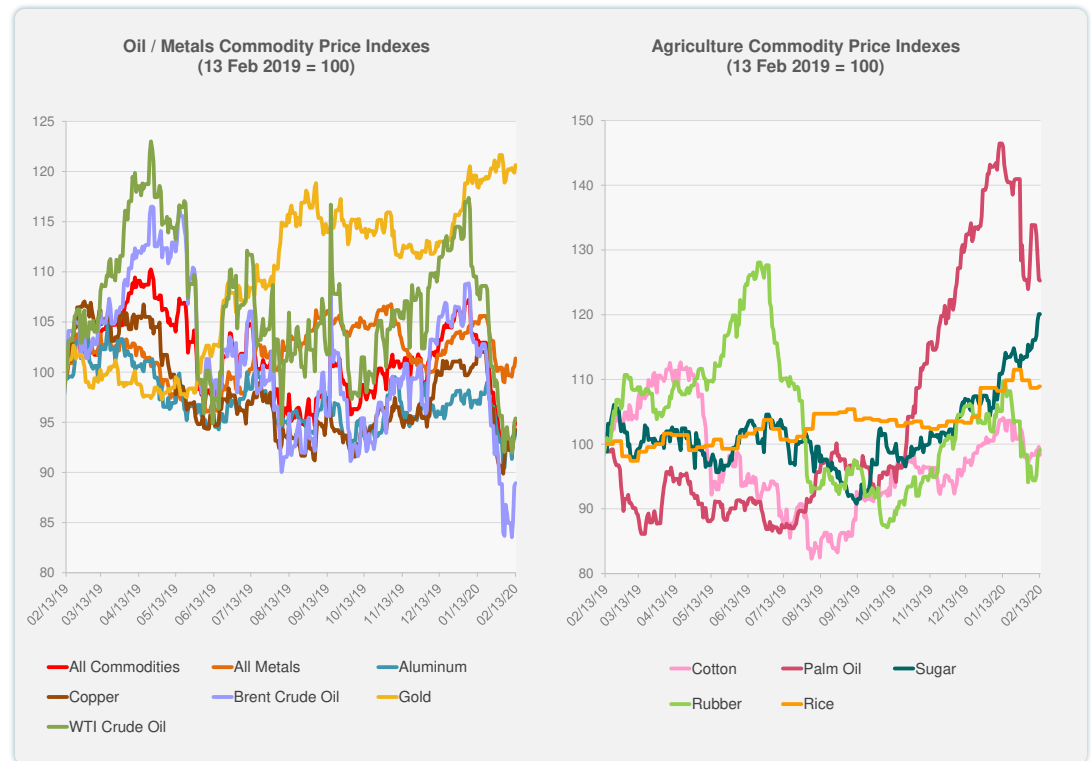
Note: Negative/Decreasing values indicate depreciation of local currency, and positive/increasing values indicate appreciation.
Source: Bloomberg.



Source: Bloomberg.

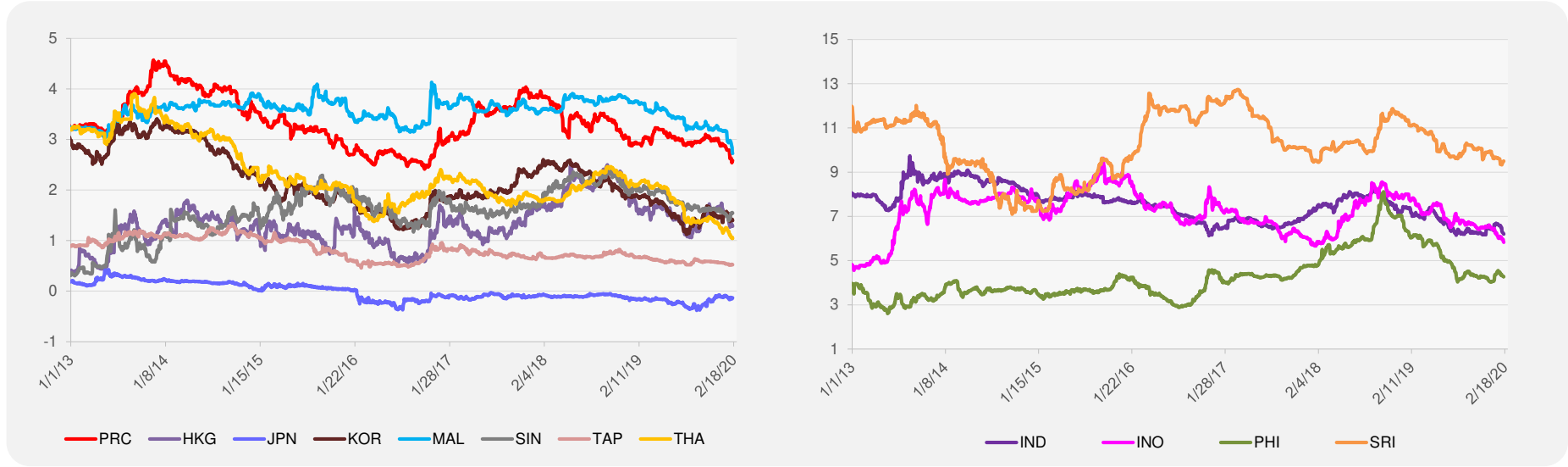
	Unit	Latest Closing	% change from Previous Day	% change from 01-Jan-20
S&P All Commodities	US\$	394.01	0.50	-9.68
S&P All Metals	US\$	213.34	0.83	-1.93
Aluminum	US\$/metric ton	1,722.15	0.61	-3.32
Copper	US\$/metric ton	5,772.25	0.44	-6.13
Cotton	US cents/lb	65.00	-1.26	-1.96
Brent Crude Oil	US\$/barrel	56.38	0.32	-14.98
WTI Crude Oil	US\$/barrel	51.42	0.49	-15.79
Gold	US\$/troy oz	1,576.00	0.63	3.87
Palm Oil	US\$/metric tonne	653.39	-0.11	-11.65
Rice ¹	US\$/metric ton	464.00	0.00	0.22
Rubber ²	US\$/kg	157.50	0.32	-5.29
Sugar	US cents/lb	15.24	0.00	12.56

¹ Latest closing price from 11 February 2020.
² Singapore Exchange, Ribbed Smoked Sheet Rubber.

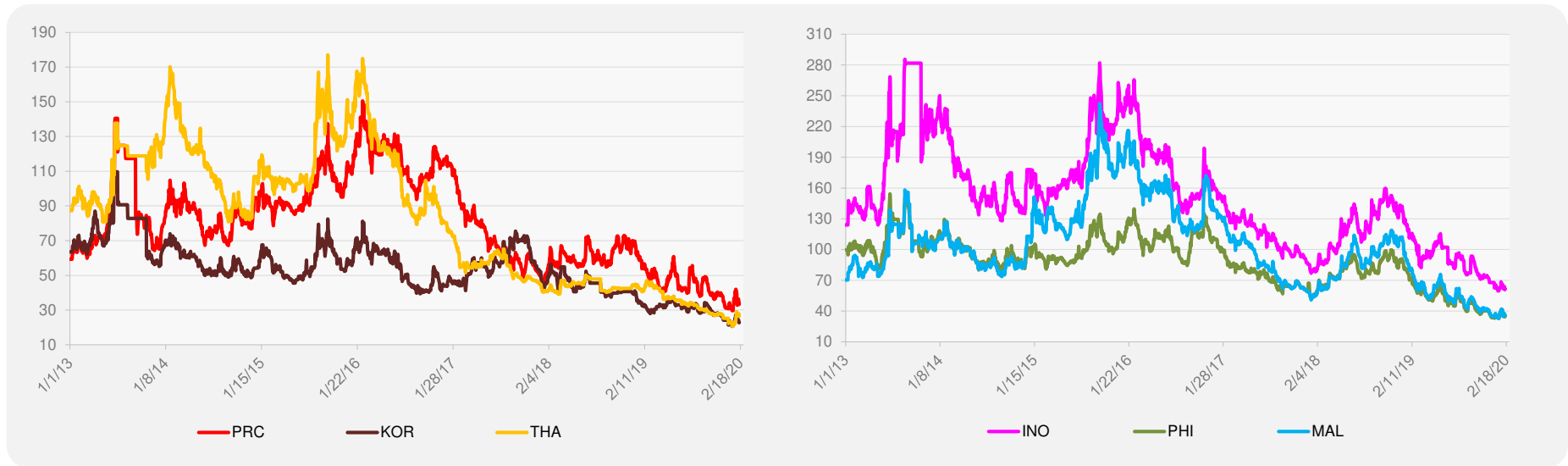


Source: Bloomberg.

5-YEAR LOCAL CURRENCY GOVERNMENT BOND YIELDS (%)



5-YEAR CREDIT DEFAULT SWAP¹



¹ In USD and based on sovereign bonds.
Source: Bloomberg.